

# Falmouth School - Boys Trousers

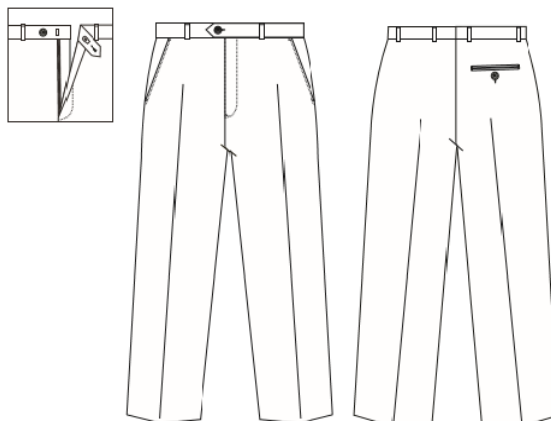
## Size Guide



### Slim Fit Trousers

#### Slimbridge-Senior flat front slimfit trouser

- Ref: 1KA
- 65% Polyester / 35% Viscose
- Inside waist adjuster
- Two side pockets
- Back pocket with button
- Belt loops
- Hook and bar fastening with button extension
- Lined waistband
- Maxtech™ stain resistant finish



#### Junior - £16.50

WAIST"	24	26	27	28		
INSIDE LEG"	24	28	27	29	30	32
LENGTH"	R	R	S	R	R	L

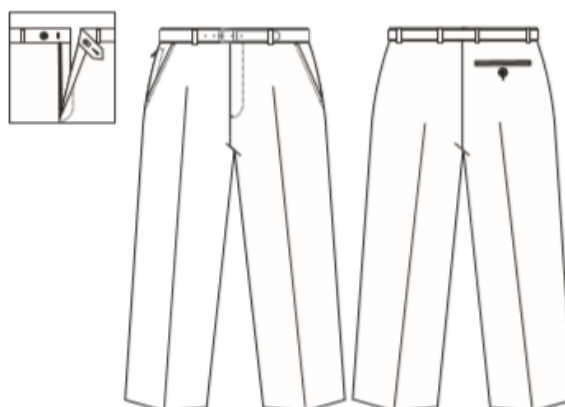
#### Senior - £20.50

WAIST"	29			30			32			34		36		38		40	
INSIDE LEG"	28	30	32	30	32	34	30	32	34	32	34	32	34	32	34	32	34
LENGTH"	S	R	L	S	R	L	S	R	L	R	L	R	L	R	L	R	L

### Standard Fit Trousers

#### Falmouth-Senior flat front trouser

- Ref: 1K8
- 65% Polyester / 35% Viscose
- Inside waist adjuster
- Two side pockets
- Back pocket with button
- Security pocket with zip
- Belt and belt loops
- Hook and bar fastening with button extension
- Spare button
- Maxtech™ stain resistant finish



#### Junior - £18.00

WAIST"	24	25	26		27		28		
INSIDE LEG"	24	26	26	28	27	29	28	30	32
LENGTH"	R	R	S	R	S	R	S	R	L

#### Senior - £22.00

WAIST"	29			30			31	32			34			36			38		40		42	44	46	48*	50*
INSIDE LEG"	28	30	32	30	32	34	32	30	32	34	30	32	34	30	32	34	32	34	32	34	UF	UF	UF	UF	UF
LENGTH"	S	R	L	S	R	L	R	S	R	L	S	R	L	S	R	L	R	L	R	L					

# Falmouth School - Girls Trouser & Skirt



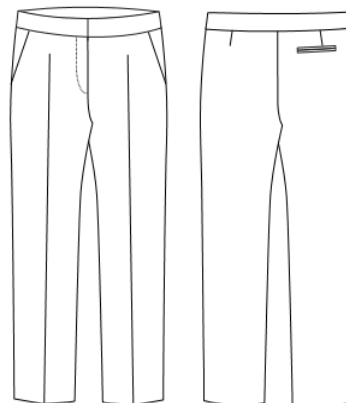
## Size Guide

### Slim Fit Trouser

#### TRIMLEY-Slimfit trouser

Ref: 1LN

- 62% Polyester / 33% Viscose / 5% Elastane
- Two mock front pockets
- Functional back pocket
- Front zip fastening with hook and bar
- Sits low on waist for a comfortable fit



#### Junior - £18.00

TO FIT WAIST"	22		24		26		28	
INSIDE LEG"	29	31	29	31	29	31	28	30
LENGTH"	S	R	S	R	S	R	S	R

#### Senior - £22.00

WAIST"	30			32			34			36			38		
INSIDE LEG"	29	31	33	29	31	33	29	31	33	29	31	33	29	31	33
LENGTH"	S	R	L	S	R	L	S	R	L	S	R	L	S	R	L

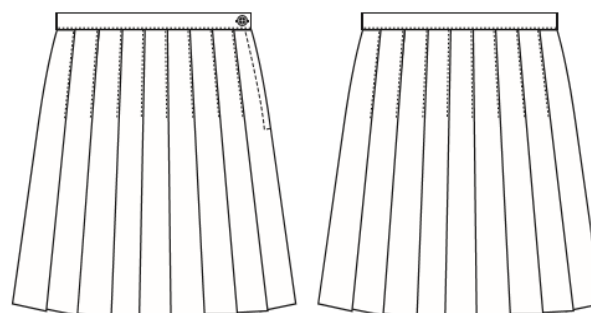
NB: Leg length on girls' trousers is measured from the waist to the hem

### Standard Fit Skirt

#### Designer Pleated Skirt

Ref: 1EA

- 100% woven Polyester twill to match Ziggys blazer and Designer jacket
- Maxtech™ Plus stain resistant finish
- Side zip and button fastening
- Stitched down knife pleats



#### Junior - £18.00

WAIST"	22		24		26		28	
LENGTH"	18	20	18	20	18	20	18	20

#### Senior - £22.00

WAIST"	30			32			34			36			38		
LENGTH"	18	20	22	18	20	22	18	20	22	18	20	22	18	20	22

# Falmouth School - Blazer

## Size Guide

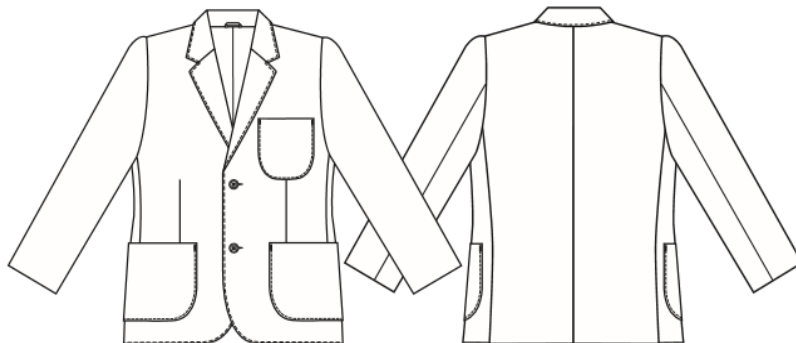


### Boys Blazer

#### Ziggys Boys Zip Entry Blazer- Two button blazer

Ref: 1UA and 1UI

- 100% woven Polyester twill
- Internal zip pockets for ID and mobile
- Concealed zip for embroidery access
- Maxtech™ Plus stain resistant finish
- Back vent



**Junior - £27.00**

CHEST"	22	24	26	28	30	32	34	36
--------	----	----	----	----	----	----	----	----

**Senior - £32.00**

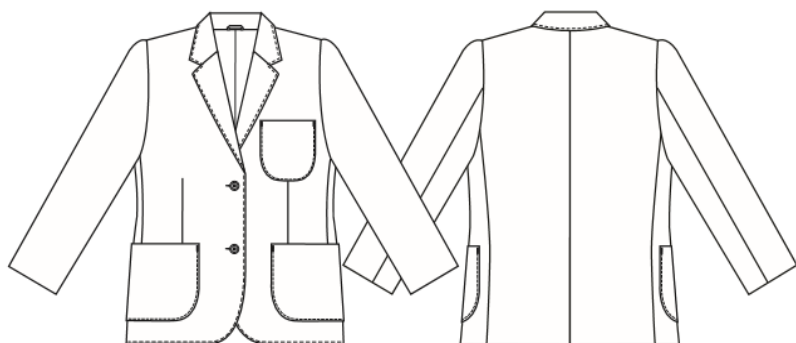
CHEST"	38	40	42	44	46	48	50	52
--------	----	----	----	----	----	----	----	----

### Girls Blazer

#### Ziggys Girls Zip Entry Blazer- Two button blazer

Ref: 1UB and 1UJ

- 100% woven Polyester twill
- Internal zip pockets for ID and mobile
- Concealed zip for embroidery access
- Maxtech™ Plus stain resistant finish



**Junior - £27.00**

TO FIT CHEST"	22	24	26	28	30	32	34	36
UK DRESS SIZE	0	2	4	6	8	10	12	14

**Senior - £32.00**

TO FIT CHEST"	38	40	42	44	46	48	50	52
UK DRESS SIZE	16	18	20	22	24	26	28	30

# Falmouth School - PE Kit

## Size Guide



### Girls PE Polo

Product Measurements (cm)							
Chest Size		30/32"		34/36"	38/40"	42/44"	46/48"
A - Chest circumference		84cm		94cm	105cm	115cm	125cm
B - Body length		56cm		59cm	61cm	64cm	67cm

\*These figures are indicative only, and some variation should be expected, due to fabric stretch and production tolerances.

#### Measuring Guide



Junior Sizes (22"-30") - £15.50

Senior Sizes (32"-38") - £18.50

A. Chest circumference: Measured 1 cm below the armhole and then doubled

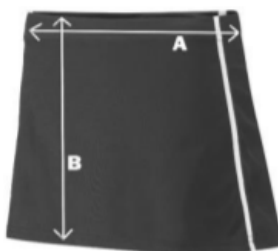
B. Body length: Measured from high shoulder point

### Girls PE Skort

Product Measurements (cm)									
Waist Size	22"	24"	26"	28"	30"	32"	34"	36"	38"
A - Waist in cm's	56cm	61cm	66cm	71cm	76cm	81cm	86cm	91cm	96cm
B - Length	35.5cm	36.5cm	37.5cm	38.5cm	39.5cm	39.5cm	40.5cm	40.5cm	41.5cm

\*These figures are indicative only, and some variation should be expected, due to fabric stretch and production tolerances.

#### Measuring Guide



Junior Sizes (22"-30") - £14.00

Senior Sizes (32"-38") - £17.00

A. Waist circumference: Measured on the waistband and then doubled

B. Length: Measured flat, from the top of the waistband to the hem

# Falmouth School - PE Kit

## Size Guide



### Girls PE Leggings

Product Measurements (cm)							
Waist Size	24/26"	26/28"	28/30"	30/32"	32/34"	34/36"	38/40"
A - Waist Size	56cm	60cm	64cm	68cm	72cm	76cm	80cm
B - Leg length	83cm	84cm	85cm	86cm	87cm	88cm	89cm

\*These figures are indicative only, and some variation should be expected, due to fabric stretch and production tolerances

Measuring Guide



**Junior Sizes (24/26"-28/30") - £15.00**

**Senior Sizes (30/32"-38/40") - £18.00**

A. Waist circumference: Measured unstretched on the waistband and then doubled

B. Leg: Measured flat, from the top of the seam to the hem

### Unisex PE Hoodie

Product Measurements (cm)						
Chest Size	30/32"	32/34"	34/36"	38/40"	42/44"	46/48"
A - Chest circumference	92cm	97cm	102cm	117cm	128cm	138cm
B - Body length	60cm	64cm	67cm	74cm	78cm	82cm

\*These figures are indicative only, and some variation should be expected, due to fabric stretch and production tolerances.

Measuring Guide



**Junior Sizes (30"-36") - £19.00**

**Senior Sizes (38"-48") - £25.00**

**+£4.00 for embroidered initials  
if required**

A. Chest circumference: Measured 2.5cm below the armhole and then doubled

B. Body length: Measured from high shoulder point

# Falmouth School - PE Kit

## Size Guide



### Boys Multi-Use PE Shirt

Product Chest Measurements (Inches)									
XSB	SB	MB	LB	XLB	Small	Medium	Large	XLarge	2XLarge
30"	32"	34"	36"	38"	40"	42"	44"	46"	48"
Junior Sizes - £24.00				Senior Sizes - £30.00					

### Boys PE Shorts

Product Measurements (cm)							
Waist Size	24/26"	28/30"	32"	34"	36"	38"	40"
A - Waist Size	51cm	56cm	59cm	61cm	64cm	67cm	69cm
B- Leg length	36cm	39cm	41cm	42cm	44cm	45cm	46cm

\*These figures are indicative only, and some variation should be expected, due to fabric stretch and production tolerances.

Measuring Guide

**Junior Sizes (24"-30") - £10.00**

**Senior Sizes (32"-40") - £12.00**

A. Waist circumference: Measured unstretched on the waistband and then doubled  
 B. Leg: Measured flat, from the top of the seam to the hem

### Unisex PE Socks

Mini	UK Size 12-2	£5.00
Junior	UK Size 3-6	£5.00
Senior	UK Size 7-11	£5.50